

Mr Slim Outdoor Unit

SUZ-M Series
PRODUCT FLYER



The Mitsubishi Electric SUZ-M Series outdoor units are now available in R32 refrigerant, making it more energy efficient compared to previous R410A models. Ideal for residential and light commercial applications, SUZ-M Series works with a broad range of indoor units, perfect for many interior designs. The SUZ-M Series are rated to 52°C ambient.



Compact Design

The compact design allows the SUZ-M units to be more versatile, with the ability to fit into small spaces where limited room is an issue.



24% reduction in Weight 41kg
18% reduction in Height 714mm

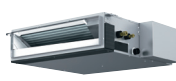





Easier Transportation & Installation

The SUZ-M50 has an 18% reduction in height and a 24% reduction in weight, compared to the previous model. Facilitating easier transportation and installation.



Versatile Design

Connectible to a wide range of indoor units, giving it versatility to ideally match the installation needs of most typical residential and light commercial applications.

	COMPACT BULKHEAD	LOW PROFILE DUCTED	COMPACT 4-WAY CASSETTE	4-WAY CASSETTE	1-WAY CASSETTE	CEILING SUSPENDED
	SEZ-M25/35/50/60/71DA(L)	PEAD-M50/60/71JAA(D)	SLZ-M25/35/50/60FA-A	PLA-M71EA-A	MLZ-KP25/35/50VF	PCA-M50/60/71KA
						
2.5kW	●		●		●	
3.5kW	●		●		●	
5.0kW	●	●	●		●	●
6.0kW	●	●	●			●
7.1kW	●	●		●		●

Features

- » Full Inverter technology
- » R32 refrigerant for lower GWP (Global warming potential)
- » Single phase power
- » Demand response capable
- » Wi-Fi connectable (optional adapter required per indoor unit)
- » 52°C operating temperature

INDOOR UNITS

SLZ-M Series

SLZ-M25/35/50/60FA-A)



PANEL	With signal receiver	With 3D i-see sensor	With wireless remote control
SLP-2FA			
SLP-2FAL	●		
SLP-2FAE		●	
SLP-2FALE	●	●	
SLP-2FALM	●		●
SLP-2FALME	●	●	●

OUTDOOR UNIT

R32



SUZ-M25/35VAD-A



SUZ-M50VAD-A



SUZ-M60/71VAD-A

REMOTE CONTROL



PAR-SL100A-E



PAR-40MAA



PAR-CT01
MAA-S/SB



PAR-CT01
MAA-PB

INCLUDED
SLP-2FALM/
SLP-2FALME

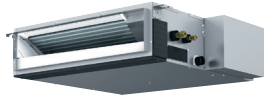
OPTIONAL

OPTIONAL

OPTIONAL

SEZ-M Series

SEZ-M25/35/50/60/71DA(L)



SEZ-M25/35/50/60/71 DA (Requires Wired Remote Controller)

SEZ-M25/35/50/60/71 DAL (Wireless Remote Controller is enclosed)

OUTDOOR UNIT

R32



SUZ-M25/35VAD-A



SUZ-M50VAD-A



SUZ-M60/71VAD-A

REMOTE CONTROL



PAR-SL97A-E



PAR-40MAA



PAR-CT01
MAA-S/SB



PAR-CT01
MAA-PB

INCLUDED
SEZ-M DAL

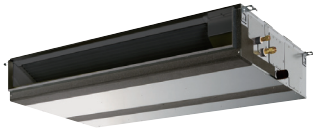
OPTIONAL

OPTIONAL

OPTIONAL

PEAD-M Series

PEAD-M50/60/71JAA(D)



OUTDOOR UNIT

R32



SUZ-M50VAD-A



SUZ-M60/71VAD-A

REMOTE CONTROL



PAR-SL97A-E



PAR-40MAA



PAR-CT01
MAA-S/SB



PAR-CT01
MAA-PB

OPTIONAL

OPTIONAL

OPTIONAL

OPTIONAL

MLZ-KP Series

MLZ-KP25/35/50VF



PANEL: MLP-444W

OUTDOOR UNIT

R32



SUZ-M25/35VAD-A



SUZ-M50VAD-A

REMOTE CONTROL



PAR-SL100A-E



PAR-40MAA



PAR-CT01
MAA-S/SB



PAR-CT01
MAA-PB

INCLUDED
MLZ-KP

OPTIONAL

OPTIONAL

OPTIONAL

Additional interface required for optional controllers for the MLS-KP



*Optional Wi-Fi adapter required per unit. Requires an Internet connection and the App downloaded from the App Store or Google Play Store on your smartphone or tablet with the latest Operating System available.

*To use Amazon Alexa to control your air conditioner, you will need an Amazon Alexa Echo device.

*To use Google Assistant to control your air conditioner, you will need a Google Home smart speaker.

SPECIFICATIONS

COMPACT BULKHEAD SPLIT SYSTEM								
Indoor Unit			SEZ-M25DA(L)	SEZ-M35DA(L)	SEZ-M50DA(L)	SEZ-M60DA(L)	SEZ-M71DA(L)	
Outdoor Unit			SUZ-M25VAD-A	SUZ-M35VAD-A	SUZ-M50VAD-A	SUZ-M60VAD-A	SUZ-M71VAD-A	
Refrigerant			R32					
Power Source			230V, Single, 50/60Hz, Outdoor unit supply					
Cooling	Capacity (Min-Rated-Max)	kw	1.5-2.5-3.3	1.5-3.5-4.0	2.3-5.0-6.3	2.3-6.0-6.5	2.8-7.1-8.3	
	Total input (Rated)	kw	0.70	1.01	1.40	1.73	2.14	
	EER/AEER		3.57/3.45	3.46-3.39	3.57/3.51	3.46/3.41	3.31/3.27	
	Running current (Rated)	A	3.70	4.70	6.40	7.60	9.40	
	Sound Pressure Level	In (Lo-Mid-Hi)		23-26-30	23-28-33	30-34-37	30-34-38	30-35-40
		Out (PWL)		45(59)	48(62)	48(64)	49(65)	49(66)
Air Volume (In) Lo-Mid-Hi	L/S		92-117-150	117-150-183	167-208-250	200-250-300	200-267-333	
Heating	Capacity (Min-Rated-Max)	kw	1.3-3.0-4.2	1.3-4.0-5.0	1.7-6.0-7.2	2.5-7.0-8.0	2.6-8.0-10.4	
	Total input (Rated)	kw	0.87	1.11	1.66	2.00	2.22	
	COP/ACOP		3.44/3.35	3.6/3.53	3.61/3.57	3.50/3.45	3.6/3.55	
	Running current (Rated)	A	4.30	5.00	7.50	8.70	9.70	
	Sound Pressure Level	In (Lo-Mid-Hi)		23-26-30	23-28-33	30-34-37	30-34-38	30-35-40
		Out (PWL)		46(59)	48(63)	49(66)	51(68)	51(68)
Air Volume (In) Lo-Mid-Hi	L/S		92-117-150	117-150-183	167-208-250	200-250-300	200-267-333	
Starting Current		A	4.30	5.00	7.50	8.70	9.70	
Indoor unit	Input (Rated)	kw	0.04	0.05	0.07	0.07	0.1	
	Dimensions (HxWxD)	mm	200x790x700	200x990x700	200x990x700	200x1190x700	200x1190x700	
	Weight (Panel)	kg	17.5(-)	21(-)	22(-)	25.5(-)	25.5(-)	
	Static Pressure	Pa	5-15-35-50					
Outdoor unit	Dimensions (HxWxD)	mm	550x800x285		714x800x285	880x840x330		
	Weight	kg	30	35	41	54	55	
	Max. Running Current	A	6.8	8.5	13.5	14.8	14.8	
	Breaker size	A	10			20		
Piping	Diameter (Gas/Liquid)	mm	9.52/6.35		12.7/6.35	15.88/6.35	15.88/9.52	
	Max. Length/Height	m	20/12			30/30		
Guaranteed Operating Range (outdoor)		Cooling (°C)	-10 - 52			-15 - 52		
		Heating (°C) ²	-10 - 24			-15 - 24		

¹ MEPS compliant at part load

² With the optional air protection guide, the operation at -15°C outdoor temperature is possible

LOW PROFILE DUCTED SPLIT SYSTEM							
Indoor Unit			PEAD-M50JAA(D)	PEAD-M60JAA(D)	PEAD-M71JAA(D)		
Outdoor Unit			SUZ-M50VAD-A	SUZ-M60VAD-A	SUZ-M71VAD-A		
Refrigerant			R32				
Power Source			230V, Single, 50/60Hz				
Cooling	Capacity (Min-Rated-Max)	kw	2.3-5.0-6.2	2.3-6.0-6.5	2.8-7.1-8.1		
	Total input (Rated)	kw	1.33	1.72	1.98		
	EER/AEER		3.57/3.70	3.48-3.43	3.58/3.53		
	Running current (Rated)	A	6.00	7.50	8.70		
	Sound Pressure Level	In (Lo-Mid-Hi)		30-35-39	30-32-36	30-33-38	
		Out (PWL)		48(64)	49(65)	49(66)	
Air Volume (In) Lo-Mid-Hi	L/S		200-242-283	242-300-350	292-350-417		
Heating	Capacity (Min-Rated-Max)	kw	1.7-6.0-7.4	2.8-7.0-8.0	2.6-8.0-10.2		
	Total input (Rated)	kw	1.44	1.85	2.00		
	COP/ACOP		4.16/4.09	3.78/3.72	4.00/3.93		
	Running current (Rated)	A	6.40	8.10	8.80		
	Sound Pressure Level	In (Lo-Mid-Hi)		30-35-39	30-32-36	30-33-38	
		Out (PWL)		49(66)	51(68)	51(66)	
Air Volume (In) Lo-Mid-Hi	L/S		200-242-283	242-300-350	292-350-417		
Starting Current		A	6.4	8.1	8.8		
Max. Running Current		A	13.5	14.8	14.8		
Indoor unit	Input (Rated)	kw	0.11/0.09	0.12/0.10	0.17/0.15		
	Dimensions (HxWxD)	mm	250x900x732	250x1100x732			
	Weight (Panel)	kg	26(27)	29(30)	29(30)		
	Static Pressure	Pa	35/50/70/100/125				
Outdoor unit	Dimensions (HxWxD)	mm	714x800x285	880x840x330	880x840x330		
	Weight	kg	41	54	55		
	Breaker size	A	20				
Piping	Diameter (Gas/Liquid)	mm	12.7/6.35	15.88/6.35	15.88/9.52		
	Max. Length/Height	m	30/30				
Guaranteed Operating Range (outdoor)		Cooling (°C)	-15 - 52			-15 - 52	
		Heating (°C) ²	-15 - 24			-15 - 24	

¹ MEPS compliant at part load

² With the optional air protection guide, the operation at -15°C outdoor temperature is possible

SPECIFICATIONS

4-WAY CASSETTE SPLIT SYSTEM							
Indoor Unit			SLZ-M25FA-A	SLZ-M35FA-A	SLZ-M50FA-A	SLZ-M60FA-A	PLA-M71EA-A
Outdoor Unit			SUZ-M25VAD-A	SUZ-M35VAD-A	SUZ-M50VAD-A	SUZ-M60VAD-A	SUZ-M71VAD-A
Refrigerant			R32				
Power Source			230V, Single, 50Hz, Outdoor unit supply				
Cooling	Capacity (Min-Rated-Max)	kw	1.5-2.5-3.5	1.5-3.5-4.0	2.3-5.0-5.5	2.3-5.6-6.7	2.8-7.1-8.1
	Total input (Rated)	kw	0.62	0.93	1.49	1.64	1.87
	EER/AEER		4.03/3.88	3.76/3.68	3.35/3.31	3.41/3.35	3.79/3.73
		Star Rating	3.5	3.0	2.0	2.0	-
	AEER (part-load%) ¹		-	4.85	-	-	-
	Running current (Rated)	A	3.30	4.30	6.60	7.20	8.20
	Sound Pressure Level	In (Lo-Mid-Hi)	25-28-31	25-33-39	27-34-39	32-40-43	28-30-32-34
		Out (PWL)	45(59)	48(62)	48(64)	49(65)	49(66)
Air Volume (In) Lo-Mid-Hi	L/S	108-125-142	108-150-192	117-150-192	125-192-217	267-283-317-350	
Heating	Capacity (Min-Rated-Max)	kw	1.3-3.0-4.1	1.3-4.0-5.0	1.7-5.0-5.5	2.5-6.0-7.6	2.6-8.0-10.2
	Total input (Rated)	kw	0.78	1.05	1.58	1.87	2.17
	COP/ACOP		3.85/3.73	3.80/3.73	3.16/3.12	3.20/3.16	3.68/3.63
		Star Rating	2.5	2.5	1.5	1.5	-
	ACOP (Part-load%) ¹		4.77	4.87	4.54	4.63	-
	Running current (Rated)	A	3.90	4.80	7.10	8.20	9.50
	Sound Pressure Level	In (Lo-Mid-Hi)	25-28-31	25-33-39	24-34-39	34-40-43	28-30-32-34
		Out (PWL)	46(59)	48(63)	49(66)	51(68)	51(68)
Air Volume (In) Lo-Mid-Hi	L/S	108-125-142	108-150-192	117-150-192	125-192-217	267-283-317-350	
Starting Current	A	3.90	4.80	7.10	8.20	9.50	
Indoor unit	Input (Rated)	kw	0.02	0.03	0.03	0.04	0.04
	Dimensions (HxWxD)	mm	245X570X570				258X840X840
	Panel Dimensions	mm	10X625X625				40X950X950
	Weight (Panel)	kg	15 (3)				21 (5)
Outdoor unit	Dimensions (HxWxD)	mm	550x800x285		714x800x285	880x840x330	
	Weight	kg	30	35	41	54	55
	Max. Running Current	A	6.8	8.5	13.5	14.8	14.8
	Breaker size	A	10		20		
Piping	Diameter (Gas/Liquid)	mm	9.52/6.35		12.7/6.35	15.88/6.35	15.88/9.52
	Max. Length/Height	m	20/12		30/30		
Guaranteed Operating Range (outdoor)	Cooling (°C)		-10 - 52		-15 - 52		
	Heating (°C) ²		-10 - 24		-15 - 24		

¹ MEPS compliant at part load

² With the optional air protection guide, the operation at -15°C outdoor temperature is possible

1-WAY CASSETTE SPLIT SYSTEM							CEILING SUSPENDED SPLIT SYSTEM		
Indoor Unit			MLZ-KP25VF	MLZ-KP35VF	MLZ-KP50VF	PCA-M50KA	PCA-M60KA	PCA-M71KA	
Outdoor Unit			SUZ-M25VAD-A	SUZ-M35VAD-A	SUZ-M50VAD-A	SUZ-M50VAD-A	SUZ-M60VAD-A	SUZ-M71VAD-A	
Refrigerant			R32						
Power Source			230V, Single, 50Hz, Outdoor unit supply						
Cooling	Capacity (Min-Rated-Max)	kw	1.5-2.5-3.2	1.5-3.5-4.1	2.3-5.0-5.5	2.3-5.0-6.0	2.3-6.0-6.5	3.3-7.1-8.1	
	Total input (Rated)	kw	0.59	0.90	1.37	1.28	1.60	1.98	
	EER/AEER		4.23/4.07	3.88/3.80	3.64/3.59	3.90/3.84	3.75/3.68	3.58/3.53	
		Star Rating	3.5	3.0	2.5	-	-	-	
	Running current (Rated)	A	3.30	4.20	6.10	5.80	7.00	8.70	
	Sound Pressure Level	In (Lo-Mid-Hi)	27-31-34-38	27-32-36-40	29-36-41-47	32-34-37-40	33-35-37-40	35-37-39-41	
		Out (PWL)	45(59)	48(62)	48(64)	49(65)	49(66)		
	Air Volume (In) Lo-Mid-Hi	L/S	100-120-133-147	100-122-140-157	100-138-163-190	167-183-217-250	250-267-283-317	267-283-300-333	
Heating	Capacity (Min-Rated-Max)	kw	1.3-3.2-4.2	1.3-4.1-4.7	1.7-6.0-6.8	1.7-6.0-7.0	2.8-7.0-8.0	3.5-8.0-10.2	
	Total input (Rated)	kw	0.79	1.13	1.83	1.65	1.72	2.24	
	COP/ACOP		4.05/3.93	3.62/3.56	3.27/3.24	3.63/3.59	4.06/4.00	3.57/3.52	
		Star Rating	3.5	2.5	2.0	-	-	-	
	ACOP (Part-load%) ¹		-	4.09	4.75	-	-	-	
	Running current (Rated)	A	4.00	5.00	8.10	7.30	7.50	9.80	
	Sound Pressure Level	In (Lo-Mid-Hi)	26-29-34-37	26-32-36-40	26-37-42-48	32-34-37-40	33-35-37-40	35-37-39-41	
		Out (PWL)	46(59)	48(63)	49(66)	49(66)	51(68)	51(68)	
Air Volume (In) Lo-Mid-Hi	L/S	100-117-137-153	100-128-147-165	100-147-172-197	167-183-217-250	250-267-283-317	267-283-300-333		
Starting Current	A	4.00	5.00	8.10	7.30	7.50	9.80		
Indoor unit	Input (Rated)	kw	0.04	0.04	0.04	0.05	0.06	0.06	
	Dimensions (HxWxD)	mm	185x1102x360			230x960x680	230x1280x680		
	Panel Dimensions	mm	24x1200x424			-	-	-	
	Weight (Panel)	kg	15.5 (3.5)			26	32	32	
Outdoor unit	Dimensions (HxWxD)	mm	550x800x285		714x800x285	880x840x330			
	Weight	kg	30	35	41	41	54	55	
	Max. Running Current	A	6.8	8.5	13.5	13.5	14.8	14.8	
	Breaker size	A	10		20				
Piping	Diameter (Gas/Liquid)	mm	9.52/6.35		12.7/6.35	15.88/9.52			
	Max. Length/Height	m	20/12		30/30				
Guaranteed Operating Range (outdoor)	Cooling (°C)		-10 - 52		-15 - 52				
	Heating (°C) ²		-10 - 24		-15 - 24				

¹ MEPS compliant at part load

² With the optional air protection guide, the operation at -15°C outdoor temperature is possible